

22ND ANNIVERSARY SEASON

MIDAM
INTERNATIONAL

www.midamerica-music.com
midam@midamerica-music.com
212.239.0205

REYKJAVÍK & THE GOLDEN CIRCLE ICELAND 2027

Sunday, October 10 - Sunday, October 17, 2027

featuring

**A PROFESSIONAL ICELANDIC ORCHESTRA
& DISTINGUISHED SOLOISTS**



HALLGRÍMSKIRKJA, REYKJAVÍK

THURSDAY, OCTOBER 14, 2027

The main gala concert featuring guest conductors and their 80+ voice choirs with members of a professional Icelandic orchestra and distinguished soloists in the largest church in Iceland.

SKÁLHOLTSDÓMKIRKJA, SKÁLHOLT

SATURDAY, OCTOBER 16, 2027

Optional spotlight concert opportunity for choirs to perform with limited accompaniment (piano available).



Peter Tiboris, Founder, General & Music Director Emeritus
Sir John Rutter CBE, Conductor Laureate

2027 Iceland Residency Land Package Inclusions

8 days &
7 nights

\$4,950

per person (based on
single occupancy)

*airfare not included

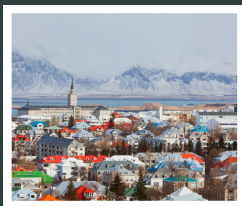
PERFORMANCE & ARTISTIC ADMINISTRATION

- **Two public performances:**

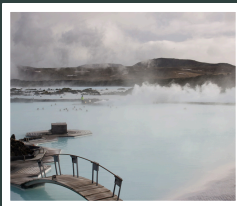
- The main gala concert is at Hallgrímskirkja on October 14 featuring visiting guest conductors and their 80+ voice choirs with a professional Icelandic orchestra.
- The optional spotlight concert is at Skálholtsdómkirkja on October 16. This concert will feature participating choirs led by their own conductors. Accompaniment is limited to piano for the spotlight concert.
- Professional concert photographs and a complimentary YouTube video of main gala concert.
- National and international press coverage.
- Publicity, management, and audience development of your concerts.
- Complimentary concert poster given to each participant.

**A minimum of three groups must agree to do the spotlight performance before it can go forward.*

THREE CULTURAL TOURS



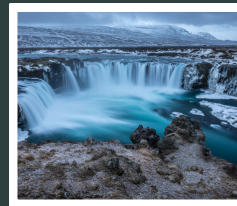
Reykjavik Tour



Blue Lagoon Tour



Museums & Exhibits Tour



Golden Circle Tour

- Entrance fee, bus transportation (if necessary), a professional guide, personal broadcast microphones, and hearing devices are all included.
- Three tours:

First Tour: Reykjavik City Tour

Second Tour: Blue Lagoon **OR** Museums & Exhibits Tour

Third Tour: Golden Circle (includes lunch)

*Descriptions of each tour on page 7.

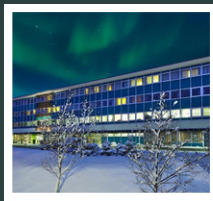
2027 Iceland Residency Land Package Inclusions (continued)

8 days & 7 nights
\$4,950
per person (based on single occupancy)
**airfare not included*

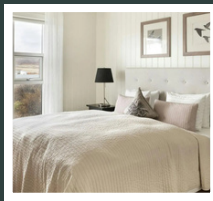
LODGING & BOARD:

- Five nights at **Berjaya Hotel Natura* and 2 nights at **Hótel Grímsborgir* at double occupancy. Click the underlined caption to learn more about the hotel.

Occupancy options:



[Berjaya Hotel Natura](#)



[Hótel Grímsborgir](#)

| | | |
|---------|-------------------------|--------------------|
| Single | One bed & one person | \$4,950 per person |
| *Double | One bed & two people | \$3,950 per person |
| *Twin | Two beds & two people | \$3,950 per person |
| *Triple | Two beds & three people | \$3,950 per person |

**For double, twin, or triple occupancy, all roommates must notify the Manager of Operations for MidAm, Madison Zahorsky, at mzahorsky@midamerica-music.com*

- All local taxes, gratuities (including tips for guides and bus drivers), and Value Added Tax (VAT).
- MidAm International personnel are on site in the hotel during your residency.
- Seven breakfasts, one lunch (part of cultural tour three), and one gala dinner.
- A decision regarding your hotel assignments will be made by March 1, 2027.

**Or a hotel of similar quality.*

GROUND TRANSPORTATION:

- Bus transfers for all tours, rehearsals, and concerts as needed. Airport transfers will be available on October 10 for arrivals and on October 17 for departures, connecting round trip from the Keflavík International Airport (KEF).
- An escort will accompany every bus journey.

EXCLUSIONS:

- Round-trip airfare to Iceland (see more on airfare on page 12).
- All lunches and dinners (except the gala dinner).
- Purchase of choral music.
- MidAm arranged optional tours, if applicable.

TWO PERFORMANCE OPPORTUNITIES



Main gala concert on October 14 includes guest conductors leading their 80-voice choirs at Hallgrímskirkja alongside a professional Icelandic orchestra.

Optional spotlight concert on October 16 led by their own conductors at Skálholtsdómkirkja. Accompaniment is limited to piano for the spotlight concerts.



*If any musical program does not achieve the pre-arranged target number in registrations, MidAm International reserves the right to substitute a spotlight piano-accompanied concert at a residency location, allowing for 25 minutes of stage time, which is 20 minutes of music time.



2027 CHORAL SERIES:

ICELAND SAMPLE ITINERARY

Arrive at the Keflavík International Airport (KEF) by 3:30 pm. Our staff will meet you at the airport for bus transfer to hotel. Rest of day is free.

Evening: Meeting with our Iceland team.

DAY 1

Morning: Chorus rehearsal for main gala concert at residency hotel.

Afternoon: Cultural tour one.

Evening: Optional spotlight concert rehearsal at hotel otherwise free to explore.

DAY 2

Morning: Chorus rehearsal for main gala concert at residency hotel.

Afternoon: Cultural tour two. There are two options to choose from.

Evening: Optional spotlight concert rehearsal at hotel otherwise free to explore.

DAY 3

DAY 4

Morning: Chorus rehearsal for main gala concert at residency hotel.

Afternoon & Evening: Free to explore.

Morning: Depart to Hallgrímskirkja.

Afternoon: Dress rehearsal for main gala concert at Hallgrímskirkja.

Evening: Main gala concert at Hallgrímskirkja.

DAY 5

2027 CHORAL SERIES:

ICELAND SAMPLE ITINERARY

(CONTINUED)

**DAY
6**

Morning: Check out of Reykjavik hotel.

Afternoon: Cultural tour three while transferring via bus to Golden Circle region.

Evening: Check into Golden Circle region hotel. Rehearsal for optional spotlight concert at hotel or nearby location.

Morning: Depart to Skálholtsdómkirkja for dress rehearsal for optional spotlight concert.

Afternoon: Optional spotlight concert at Skálholtsdómkirkja.

Evening: Gala dinner after concert.

**DAY
7**

**DAY
8**

Check-out and depart by coach to airport to return home.



Iceland Cultural Tours



Tour 1: Reykjavik City Tour

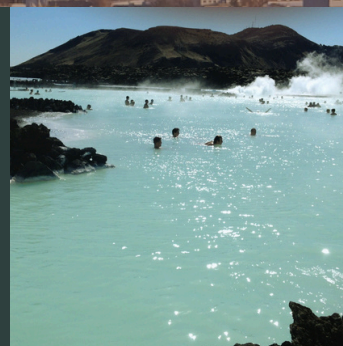
A tour to introduce you to Reykjavik and all its charm. You will travel by bus to see Hallgrímskirkja Church, Perla viewing platform, and Parliament/lake.

Tour 2: Blue Lagoon OR Museums & Exhibits

Choice One: Blue Lagoon

One of the must-do attractions when in Iceland and the warm and silica mud in the lagoon is known for its healing effect on skin problems. The geothermal water at the Blue Lagoon originates 2,000 meters below the surface, where freshwater and seawater combine at extreme temperatures. The Blue Lagoon is also named one of National Geographic's "25 Wonders of the World."

**Blue Lagoon Tour involves entering the Lagoon/swimming. Bathing suits are required for this experience. Showers, towels, shampoo/conditioner, a mud mask, and a complimentary drink is included.*



Choice Two: Museums and Exhibits

Discover Iceland's story of fire, ice, and heritage on this immersive Reykjavik tour. Begin at Orka náttúrunnar's geothermal exhibit, where you'll learn how Iceland harnesses its volcanic energy for a sustainable future. Continue to Wonders of Iceland at Perlan, where cutting-edge displays and a real ice cave bring glaciers, volcanoes, and the Northern Lights to life. Conclude at the National Museum of Iceland, where centuries of culture, art, and everyday life reveal the nation's rich history.



Tour 3: Golden Circle Tour (includes lunch)

This is a tour one cannot skip when coming to Iceland. Highlights of the day include geysers, waterfalls and lava fields. We set out from your hotel and head towards the national park of Þingvellir. You visit the largest lake in Iceland, Lake Thingvallavatn. Lunch that is included will be at the Friðheimar tomato farm, a unique lunch location where you dine inside a greenhouse. Nestled in the heart of Iceland's stunning countryside, Friðheimar. After lunch we continue towards the other sights on your tour. The waterfall Gullfoss is famous for its two cascades, perpendicular to each other. The glacier river Hvítá runs from Langjökull glacier, which we can see from the waterfall on days with good visibility. And on sunny days, a shimmering rainbow can be seen over the waterfall. In the Geysir area, you can experience the mighty Strokkur, a geyser that erupts every few minutes. The best view of the geysers is from the nearby hill with new walking trails, from which you can also see the surrounding landscape.

2027 International Residency

Deposit and Document Schedules:

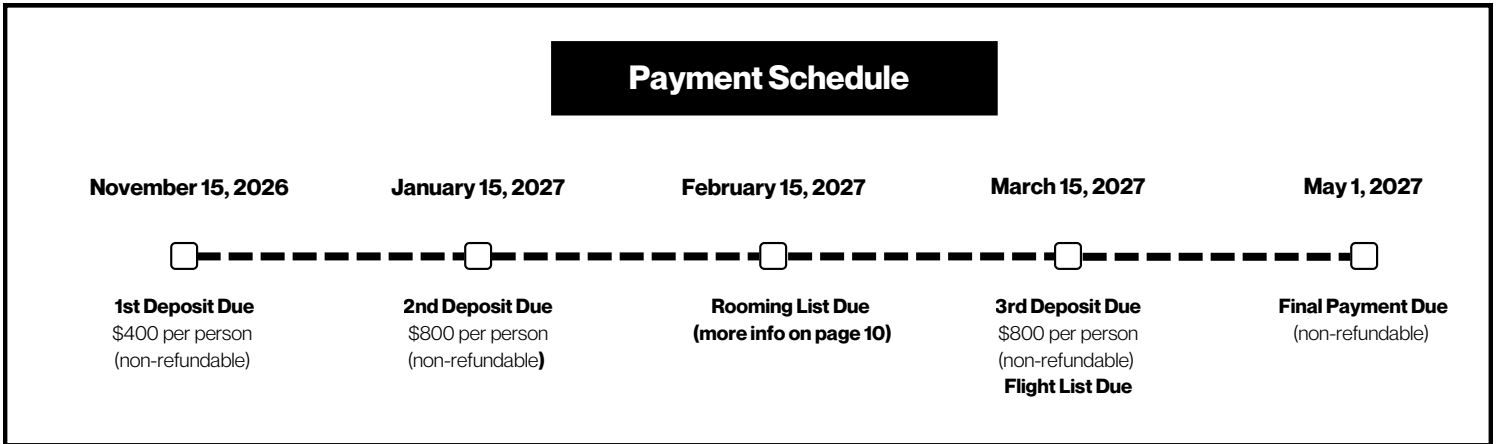


**All payments must be received in office by the due date.*

2027 Concerts

Standard Registration Deadline:

November 15, 2026



Please note that this registration method is for individual participants only, not connected to a registering group. Deposit/Document schedules are firm and all payments and all required MidAm International documents must be received by MidAm by the deposit/document deadline. MidAm retains the right to cancel for non-payment, without refund, if the deposit schedule is not met. Therefore, if any delay in payment or required MidAm document is anticipated, the individual must contact MidAm prior to the payment deadline. Additionally, if an individual's deposit is not received by the deposit deadline (and MidAm does not cancel their registration immediately), an additional \$25 late fee will be added to their past due deposit. An additional \$25 late fee will be added for each additional week that passes following the original deposit deadline if the deposit remains unpaid.

As noted on pages 2 and 3, the total cost is \$4,950 per person for a single occupancy room. This includes events, accommodations, transfers, and all local taxes, gratuities (excluding tips for guides and bus drivers), and Value Added Taxes (VAT) described in the day-to-day itinerary and specifically itemized on the "inclusions" page. This price does not include airfare to Stockholm.

For twin, double or triple occupancy, all roommates must notify the Manager of Operations for MidAm, Madison Zahorsky, at mzahorsky@midamerica-music.com prior to depositing in order to have their occupancy type changed. Any changes to your occupancy selection following your initial deposit will be made on a case-by-case basis and must be requested prior to February 15, 2027. Note that all rooms are "double" size and if a third bed is put in, it may be a cot or convertible/pull-out sofa; furthermore, the room is not larger than a standard double room. Spouses, friends, and families are welcome to be part of the residency. The same package described here applies to them as well.

Your online Concert registration must be completed in order to make your first deposit. All payments must be submitted through the individual registration website. Please complete your registration and follow all instructions for paying via ACH or Credit Card. If your residency should be cancelled by MidAm International (with exception of cancellations made due to late or non-payment), all monies are completely and immediately refundable.

*All prices listed are in U.S. Dollars (USD).

*Subject to revision

2027 International Residency Documents Information

Room List:

Includes participant's full legal name, date of birth, passport number, passport expiration date, nationality, passport origin country, cell phone number, dietary restrictions, and mobility restrictions.

***Please note that you will receive a link to the form from your point person.**

Flight List:

Indicates flight information including airline, flight number, date, and time for both arrival and departure. Please do not purchase any airfare without getting a "go ahead" from MidAm International.

***A valid passport is required, and it must remain valid for at least six months beyond the final day of the residency. All travelers (U.S. citizen or non-U.S. citizen) should inquire with the appropriate embassy or consulate regarding entry requirements.**

*Use the documents that you will receive from MidAm International.

*Be sure to complete all documents online by the requested due dates outlined on page 9.

Frequently Asked Questions (FAQ)

1

For choral concerts, is it required that music be prepared prior to arrival?

Yes. Choruses or chorus members who are not thoroughly prepared may not be allowed to rehearse or perform in the concert.

2

When will we know the schedule for our residency?

Schedules (and rehearsal locations) are published 45 days in advance of your arrival. Please refer to the general residency schedule contained in this document for approximate rehearsal and tour times.

3

When can we purchase air tickets and other reservations?

It is essential and critical that all individuals wait until they receive written confirmation and a “go-ahead” from MidAm International before making any flight arrangements. This will occur after registrations have been received and the concert is confirmed.

4

How can we request ADA accommodations?

You can request accommodations by contacting midam@midamerica-music.com.

5

What size audience can we expect at our concert?

Audiences are large and enthusiastic. MidAm International has a comprehensive public relations and audience development division that typically sees the vast majority of our international concerts sold out by concert time.

6

How are the concerts promoted and advertised?

Concerts are promoted extensively through local press and social media, along with hundreds of public and private business sources in each European location. This coverage, as well as efforts for press coverage in ensembles’ home locations are led by Andrea Niederman, our Director of Public Relations, Publications, and Audience Development and her team.

2027 International Residency Terms & Conditions (page 1/1):

Deposits, Package Credits, and Refunds

If your residency should be cancelled by MidAm International (with exception of cancellations made due to late or non-payment), all monies are completely and immediately refundable. This applies to any individual who has made any payments. Please note that this registration method is for individual participants only, not connected to a registering group. Deposit/Document schedules are firm and all payments and all required MidAm International documents must be received by MidAm by the deposit/document deadline. MidAm retains the right to cancel for non-payment, without refund, if the deposit schedule is not met. Therefore, if any delay in payment or required MidAm document is anticipated, the individual must contact MidAm prior to the payment deadline. Additionally, if an individual's deposit is not received by the deposit deadline (and MidAm does not cancel their registration immediately), an additional \$25 late fee will be added to their past due deposit. An additional \$25 late fee will be added for each additional week that passes following the original deposit deadline if the deposit remains unpaid.

Travel Insurance

Cancellation insurance is strongly recommended. MidAm International does not endorse or recommend any travel insurance company who might provide such insurance. Please investigate thoroughly through your preferred insurance carrier prior to your initial deposit.

Airfare

Airfare to and from your international residency destination are the responsibility of the participating individuals. If your air arrival is at an alternate airport, you need to arrange transport to the residency city at your own cost. Please consult with a personal travel agent and do your own research on the internet for the best possible price. Please **do not** purchase anything without getting a "go ahead" from MidAm International. **A valid passport is required, and it must remain valid for at least six months beyond the final day of the residency. All travelers (U.S. citizen or non-U.S. citizen) should inquire with the appropriate embassy or consulate regarding entry requirements.**

Participant Responsibility

MidAm International shall not be liable to any individual registrant or group for any injuries, losses, or expenses suffered or incurred by any individual registrant or group arising out of or relating to your purchase of this package. All registrants shall maintain appropriate and adequate general liability insurance coverage and any workmen's compensation insurance required by applicable state law. If not already covered by medical insurance, registrants are strongly advised to obtain adequate travel medical insurance covering the duration of their travel. It is the responsibility of all persons participating as performers to arrive on time and be fully prepared for all rehearsals as well as the performance. All participants must undertake at their own expense to comply with all dress and health requirements of governmental entities as well as the venues where the performance and other events are being held. Should these parameters not be met, MidAm retains the right to disallow those individuals from participating in the rehearsal and/or performance. All performers and non-performers as well as their concert guests give MidAm International permission to take their photo and video within the confines of this package, and to use their performance for marketing purposes indefinitely.

Force Majeure

If the specified venue is unavailable for your performance due to "acts of God" (force majeure), MidAm International reserves the right to move this performance to another concert location within the residency city, or if such move is not practicable for reasons beyond the control of MidAm International then MidAm International shall be relieved from such obligation. Acts of God (force majeure) shall include any unexpected act or circumstance that prevents or impedes MidAm from performing one or more of its contractual obligations if such impediment to MidAm's performance is beyond MidAm's reasonable control and the effects of such impediment cannot reasonably have been avoided or overcome by MidAm. For purposes of this provision, Acts of God shall include, but are not limited to: a) war (whether declared or not), hostilities, act of foreign enemies, b) civil war, riot, rebellion and revolution, act of terrorism, sabotage or piracy; c) currency and trade restriction, embargo, sanction; d) act of authority whether lawful or unlawful, compliance with any law or governmental order, expropriation, seizure of works, requisition, nationalization; e) plague, epidemic (including a recurrence of COVID-19 pandemic), natural disaster or extreme natural event; f) explosion, fire, destruction of equipment, prolonged break-down of transport, telecommunication, information system or energy; g) and general labor disturbance. In the event that "force majeure" causes the cancellation of this tour prior to departure or at any time after arrival in residency destination monies sent to MidAm International are nonrefundable.